



LOCATION MAP



Where Luxury Meets Lifestyle



preetdesignstudio.com | 9907798030



Corporate Address: T-4, 3rd Floor, City Centre, Zone-I, M.P. Nagar, Bhopal
Email: sales@soumyahomes.com, Web: www.soumyahomes.com
For Details Call: 93000 47403/08/09



Disclaimer- This brochure is purely conceptual & not a legal offering. All visual photographs used in this brochure are artists impressions. All specifications, sizes & layout etc. are tentative & subject to such variations, additions, modifications as decided by the Architects or by the Promoters.

A Grand Welcome

"The entrance gate at Soumya Greenville . is designed to give a VIP arrival experience to each resident with 24-hour security. Obviously, your guests can't un-notice the grand first impression."



GROUP PROFILE

We at Soumya Homes have been contributing in shaping the skyline of Bhopal by building elegantly designed residential and commercial properties inclusive of apartments, shopping malls and corporate structures since inception. Soumya Homes is a group housing company with distinct flair for luxury promoted by a dynamic professional team having rich experience and expertise in real estate sector. The presence of numerous aesthetic landmarks in the city of lakes, Bhopal serves as a testimony to our quality construction and dedicated efforts of over 26 years in real estate business. We have an extended group of technically qualified specialists infrastructure desired, to meet customer aspiration.



COMPLETED PROJECTS

- ✓ Soumya Apartments - I, II, III & IV
- ✓ Soumya Enclave
- ✓ Soumya Enclave Ext.
- ✓ City Centre
- ✓ Soumya Vihar - I, II, III & IV
- ✓ Soumya Estates
- ✓ Soumya Privilege
- ✓ Soumya Parklands
- ✓ Soumya Parklands Extn.
- ✓ Soumya Marvella
- ✓ Soumya Greenville

CURRENT PROJECTS

- ✓ Soumya Evergreen
- ✓ Soumya Nakshatra
- ✓ Tulip Greens
- ✓ Tulip Heights
- ✓ Fortune Soumya Heritage
- ✓ Fortune Soumya Atlantis
- ✓ Fortune Soumya Vedanta
- ✓ Fortune Soumya Santosa



GREEN, ECO-FRIENDLY AND LOW-MAINTENANCE DUPLEX BUNGALOWS

Soumya Greenville Extn., one-of-a-kind Township, where life is inspired by nature. Open the window and feel the fresh breeze of morning though your hair or fall in love with the liveliness, peace, tranquility of the ambience Soumya Greenville Extn. is project of Duplex Bungalows equipped with all modern amenities.

Soumya Greenville Extn., is not only blessed with spectacular natural bounty and pollution-free environment but also well connected with public transport facilities and has very close connectivity with banks, hospitals, schools and colleges. A place where you know you have everything revolving around your own lifestyle, Soumya Greenville Extn. is your dream home destination at the most convenient location.

Existing Soumya Greenville Actual View



Elegant Living Amidst Greenery

Soumya Greenville Extn., a collection of limited edition premium villas is a masterpiece created to introduce an elite class of lifestyle and statement to the city of Bhopal. It is meant for those rare individuals who are class apart, who belong to the extraordinary, who deserve only the unparalleled and who demand only the exclusive. It's built for those who have an affinity for quality and an uncompromising attitude towards fine tastes of life. It's crafted for those who believe that they deserve only the best.





AMENITIES

- Vaastu Based Planning.
- Maximum Plots are East-West facing.
- Underground drainage system.
- Beautiful landscape garden with Children's play area.
- Water supply through sump well.
- A Class development.
- Elegant street light.
- CC Road/Paving block.
- CC T.V. Camera.

"Luxate Yourself with Premium Location and Mesmerising Features"

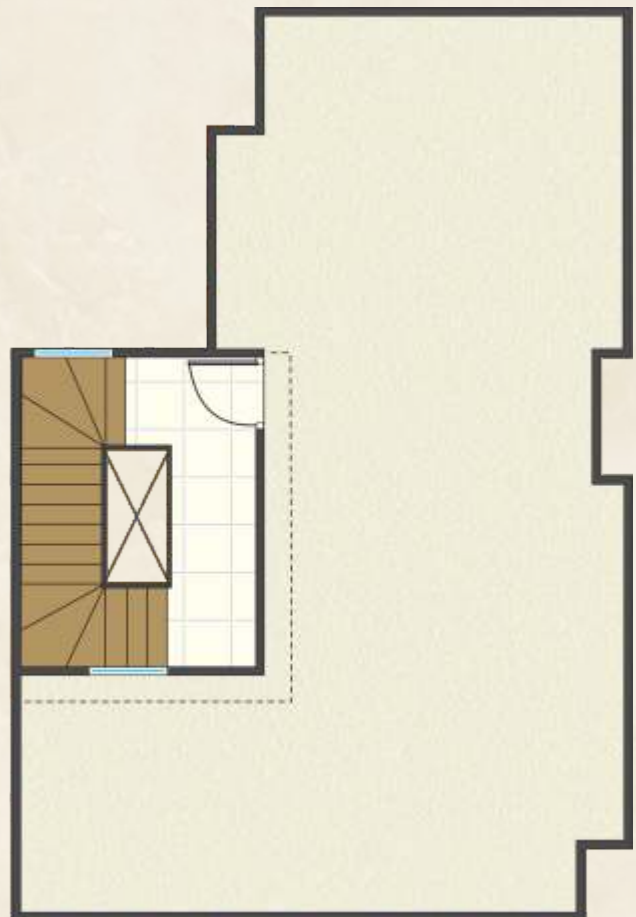
DUPLICATE PLAN



GROUND FLOOR



FIRST FLOOR



TERRACE FLOOR



3BHK DUPLEX

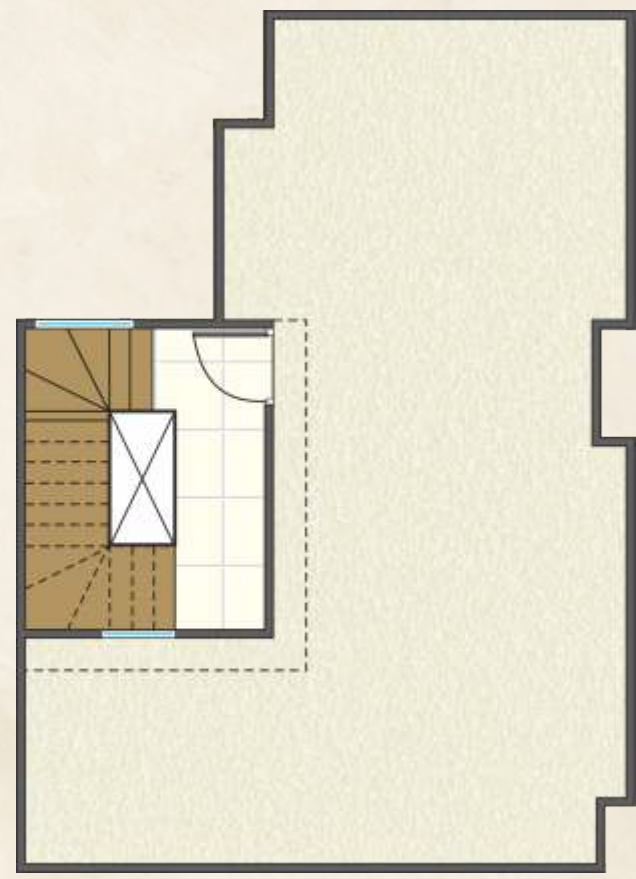
25'11" X 43'3"



GROUND FLOOR



FIRST FLOOR



TERRACE FLOOR

DUPLICATE PLAN

3BHK DUPLEX

24'7" X 39'4"

Elegant Homes. Green Surroundings. Better Living.

At Soumya Greenville Extn., every duplex is crafted with smart architecture, spacious layouts, natural ventilation, and elegant elevations to provide a luxurious yet practical living experience. Wide internal roads, green surroundings, and a secure environment make it an ideal destination for families looking for a quality lifestyle and long-term investment.



SPECIFICATION

PLANNING : Extremely well planned with spacious, Lighted & airy rooms

STRUCTURE & WALLS : RCC framed earthquake resistant structure and walls of Ghol Brick masonry

OPENINGS : All doors shall have Granite door frames.

All outer frames shall have provision for Double shutters.

Both side laminated Doors.

Front Balcony shall have sliding door with toughened glass.

Three track Aluminium windows.

FLOORING : 4'X2' Premium Quality

Vitrified Tiles-in all Rooms.
Toilets and Balcony shall have anti-skid Vitrified Tiles 4'X2'/2'x2'

KITCHEN : Granite Platform with glazed Vitrified Tiles upto 2' height above platform.

Stainless steel Sink.

TOILETS : Designer Vitrified Wall Tiles of 4'x2' in dado up to 8' Height.

CP Fittings of Jaguar.

Concealed flush tank.

Provision for Geyser in All Toilet.

Table top washbasin.

Concealed diverter for Hot/Cold water.

Wall hung Toilet seat

ELECTRIFICATION : Concealed with Flame retardant copper wires. Electrical automation modular switches of system controllable via mobile app in Drawing/Dining. Ceiling light points.

WATER SUPPLY : Pressurized water supply with individual overhead water tank.

PAINTING : External paint of water resistant paint.

Inner Paint of Oil Bound Distemper with putty base

