



DB INFRASTRUCTURES PVT. LTD.

Site Office:  
Talawali Chanda, Nr. Old Dainik Bhaskar Press, A.B. Road, Indore.  
Ph.: 0731-3009210

City Office:  
117, First Floor, Shagun Arcade, Vijay Nagar Square, A.B. Road, Indore.  
Ph: 0731-3928900/01

Email: info@dbpride.com

Web: www.dbpride.com

Architect:



Mehta & Associates

Promoted by:

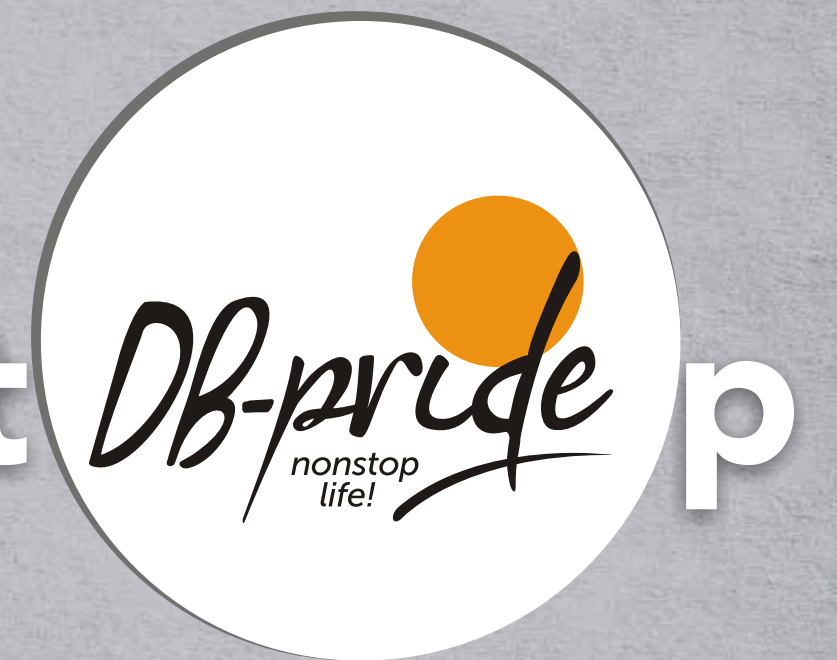


Member of



Disclaimer: The contents of this brochure are purely conceptual and have no legal binding. The developers reserve the rights to amend the layouts, plans, dimensions, elevations, colour schemes, specifications and amenities, without any notice or intimation, subject to Indore jurisdiction. Images being used are for artistic purpose only.

Live nonstop







# Discover. pride

The Financial and Educational Hub of Central India – Indore, is a melange of the old and the new. Where the old heritage structures coexist with new and developed buildings. The city, rich in culture and tradition has been welcoming people from all walks of life with open arms to come and soak themselves in the warmth and affection.

Known for its architectural splendor, Indore is a blend of three distinctive cultures coming one after the other – The royal Rajputs, the high and mighty Holkars and the belligerent British. Each monument here narrates the story of its glorious past casting a magical spell on everyone who is a part of this city.



# Nnstop Life with PRIDE



As we walk down the corridor of time, we can clearly see the transformation Indore has went through. From a city ruled by Rani Ahilya Bai Holkar to the Financial Capital of Madhya Pradesh, Indore has come a very long way.

And one such project that truly reflects the picture of the city is "DB Pride" – Nonstop Life. Everything you need, is at your doorstep here, making life a lot more easier than it ever was.

Live with Pride. Live in Pride.  
Extend this lifestyle to a lifetime and beyond!



## DB INFRASTRUCTURES



DB Infrastructures is a name synonymous to “class apart living.” Refined planning, striking architecture decked up with all modern amenities, makes DB properties the most desirable and gifted investment. A plethora of living options to choose from makes it perfect for everybody from any strata of the society.

DB Infrastructures with its legacy of carving out masterpieces has fulfilled the dream of owning the perfect house for many.

### Completed Projects



#### Aditya Avenue, Bhopal

Spread over 9.5 acres of sprawling land with 156 abodes, this township is situated on the airport road, making it one of the most famous landmarks of the city. Being the first ever integrated township of the city, Aditya Avenue offers facilities like clubhouse, play area for kids, landscaped gardens, 3 tier security system etc. Residing in Aditya Avenue is definitely an experience within itself.



#### BDI Sunshine City, Bhiwadi

Spread over 19 acres of land with 1100 units, this township can be called the "Beautiful Abode of Happiness". Premium location, modern amenities and brilliant architecture with a 4-Star Hotel and a World Class Club House, makes it the most sought after township in the vicinity.

[www.bdigroup.co.in](http://www.bdigroup.co.in)



#### DB City Mall, Bhopal

One of the biggest malls in central India and the first in Bhopal, this world class commercial cluster is spread over 13 million sq.ft. with multilevel shopping, office floors, multiplex, food courts and a 5-star category business hotel- Courtyard by Marriott right in the heart of the city.

[www.dbcity.in](http://www.dbcity.in)

### On going Projects



#### Apollo DB City, Indore

Located in one of the prime most locales of Indore, Apollo DB City is promoted by Dainik Bhaskar Group and Apollo Creations. With approximately 1000 high-rise apartments, luxurious villas and residential plots spread over 30 acres of land, the township offers studio, 2, 3, 4 and 5 BHK apartments ranging from 690 sq.ft. to 5322 sq.ft. with a fully operational club house. Many happy families have already found their dream home in Apollo DB City.

[www.apollobdcity.com](http://www.apollobdcity.com)



#### DB City, Gwalior

An integrated township project at city center- Hurawali Link Road, DB City, Gwalior is promoted by Dainik Bhaskar Group and Regency group. Spread over 30 acres, the township offers over 1100 luxurious living options ranging from apartments, duplex, plots & bungalows and a fully operational club house with all modern amenities. DB City, Gwalior is already a home to many happy families.

[www.dbcitygwalior.in](http://www.dbcitygwalior.in)

### Upcoming Projects



#### Shashwat Greens, Ahmedabad

Strategically located on S.G. Road, Shashwat Greens is approximately 17 acres of premium land offering 215 premium twin bungalows amidst acres of greens. It benefits from its proximity to premier educational institutes like Nirma University, hospitals, commercials and recreational establishments. Green and serene yet throbbing with life, this is the biggest such project in Ranip.

[www.shashwathomes.in](http://www.shashwathomes.in)

Gwalior: Mall- 3.50 Lac sq.ft.  
Raipur: Integrated township- 290 acres (Approx)





# Project Highlights

Say hello to a nonstop life at DB Pride. Seamlessly connected so that you get there faster. Served 24x7 so that life does not come to halt. Sensationally packed with amenities so that you can enjoy life. And suitably priced so that you can live your dream. **Every day. Nonstop.**



**NONSTOP  
CONNECTIVITY**  
Seamlessly Connected with  
Offices, Schools, Hospitals,  
Shopping Malls and Airport  
via AB Road, MR-11, Bypass  
and Super Corridor.



**NONSTOP  
CONVENIENCE**  
24X7 Services Like  
Plumber, Electrician,  
Chemist, Security,  
ATM, Doctor on Call  
and Convenience Store.



**NONSTOP  
COMFORT**  
Spacious and well ventilated  
homes. Club House with  
Swimming Pool, Spa & Salon,  
Gym, Creche, Guest Rooms  
and Restaurant.

Township spanning across 15 acres of land • Wide range of living options  
Well connected to main AB Road • Only high-rise apartments project in the area  
Situated on 100 ft. wide master plan road





# Homes with **N**onstop **C**onnectivity

The worldly cares may seem far away, but the world is just around the corner. Pulsating with energy, nonstop, you live in the heart of the city, connected to all major roads, prominent offices, malls, schools, hospitals, hotels etc.

Truly a gem of a location for the pride of your well-deserved life.

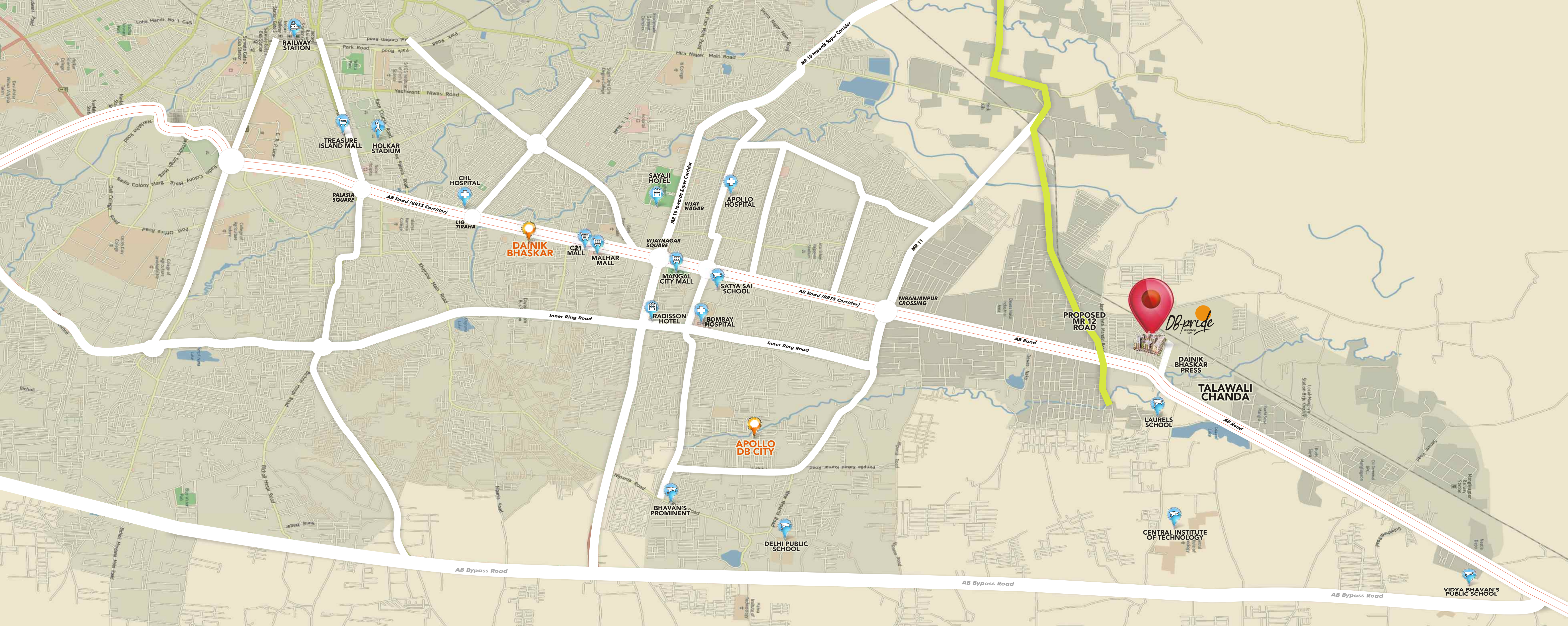


# Get there faster

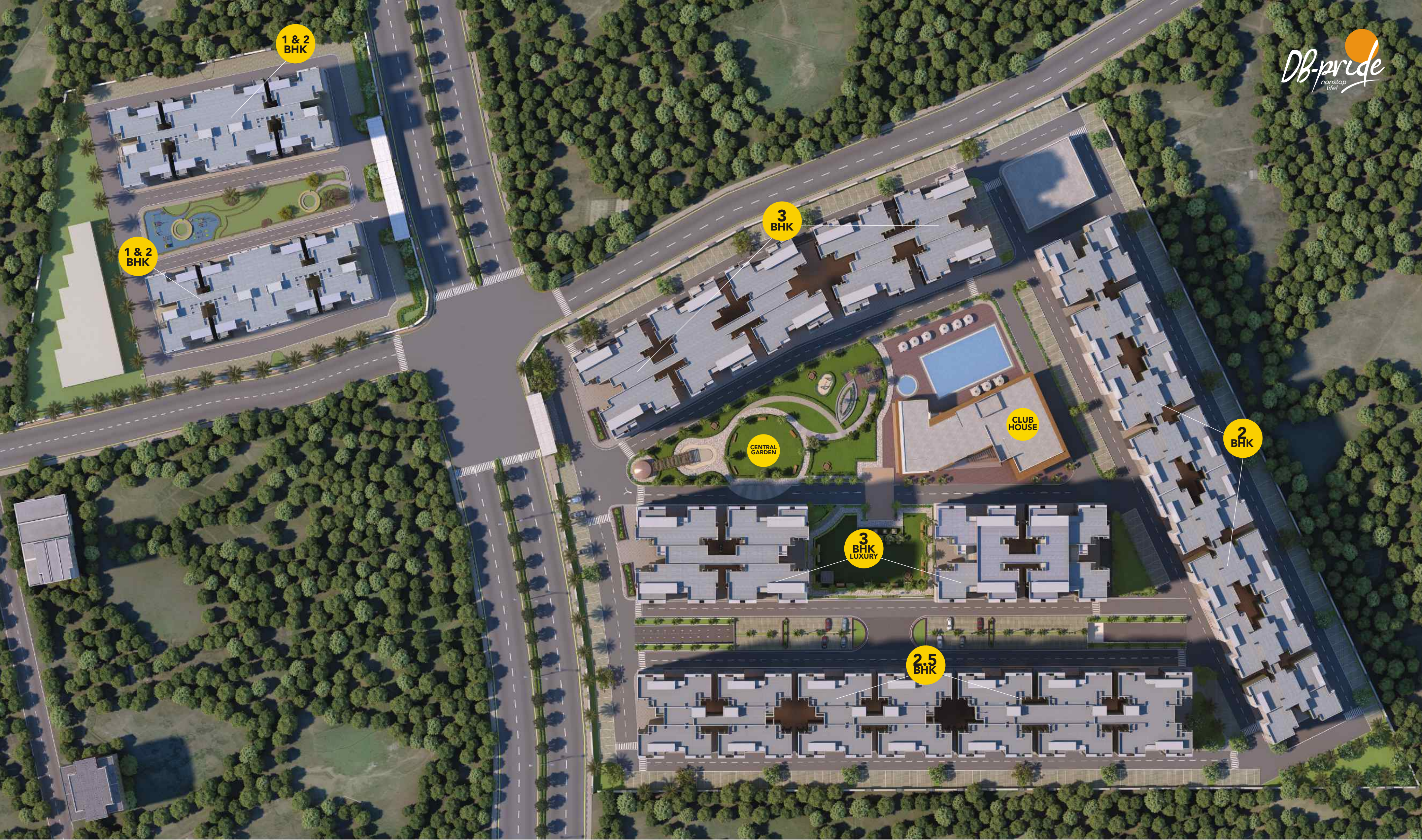
AB Road 0.2 Km	MR-11 Crossing (Rajpal Toyota Showroom) 3.1Kms	Satya Sai School 5 Kms	Bombay Hospital 5.7 Kms	Apollo DB City 5.12 Kms	Airport 17 Kms
Vijay Nagar Circle 6.3 Kms	C-21 Mall 7 Kms	Dainik Bhaskar Office 7.8 Kms	Palasia Square 9.5 Kms	Railway Station 11.6 Kms	Bus Stand 11.9 Kms

- ▮ Situated on Proposed Vijay Nagar-Talawali Chanda 6 Lane Highway. On the link road of MR11
- ▮ Situated on 100ft wide Master Plan Road
- ▮ Close proximity to proposed MR12 Road
- ▮ 5 Km from Super Corridor
- ▮ 7 Mins drive to Bombay Hospital & 5 mins to Vijay Nagar Square
- ▮ Prestigious Hotels like Sayaji, Radisson, Fortune Landmark, Shreemaya, Country Inn etc. within approachable distance
- ▮ Schools like DPS, Shri Satya Sai Vidya Vihar, Bhavans Prominent, Shishukunj, Advanced Acadmey in close proximity
- ▮ Malls like Mangal City, Orbit, C21 and Malhar Mega Mall etc. a short drive away

\*Distance mentioned herewith are approximate.







1 & 2  
BHK

1 & 2  
BHK

3  
BHK

CENTRAL  
GARDEN

CLUB  
HOUSE

2  
BHK

3  
BHK  
LUXURY

2.5  
BHK













Enter to  
the world of **luxury** &  
**comfort**

The pride of Indore is the perfect amalgamation of culture, taste and living. It is built on the ethos of a seamless blend of one generation of the next. Reaching out to fulfill your desire of a modern living. Come feel the Pride!









# Family first

Your family's security is your first priority. And your wish is our command. Well secured campus with 3-tier security system. Lush green gardens to relax and retreat. Club for your recreational activities. 24x7 on-call convenience feature. All that and much more, because we understand that the pride of your family lies in a perfect home.









# Homes with **Nonstop Comfort**

When you gain inner peace and also an outward longing to reach beyond the skies - You will live life to the fullest.

A great place to unwind. A place to gain yourself again- after leaving all the demands of the world behind. Having redeemed yourself, you turn to the world again. To feel belonged. Whether it's the hustle-bustle on the ground or the twinkling stars in the sky. You know you are home- at a sanctuary of peace.





Security



Restaurant



Electrician



Chemist



Doctor on Call/ Ambulance



Convenience Store



Internet/ WiFi



Power backup at common areas

Homes with  
**Nonstop  
Convenience**

**24x7** features

When you have the whole world of wonderful things, we want to add a few more things to make it more worthwhile.

Here's wishing you a healthy, wealthy and safe life!



# Find your life amidst the lush greens

Landscaped garden with abstract designs in tune with the modern outlook. Let us explain the design formation of the garden to you.

While life is all about circles and living a complete life; take a leaf out of a chapter in your life and save it in memories. This leaf is a reminder of your life when it began in DB pride. Hence, you will see the circles and the leaf in our designer garden formations.





Gazebo & Pergola



Senior citizen garden



Kids play area



Water body



Fountain



Party Lawn





# Homes with **more** family life

Gardens are not just to sit down.  
Can you think of a nice picnic without a garden?  
Have fun, crack jokes, play games and have a superb family time.  
What's good about this is that you don't have to go anywhere.  
You do it right here in front of your home!





# Homes with Nonstop Enjoyment

The definition of recharging and unwinding lies different for different people. For some, it is about the 'me' time in the library with a cup of coffee and a book in hand. For some, it's about having the best time with friends. For some, it can be sitting beside the pool and seeing the sun set or relaxing their tender muscles in the spa. And for some, it is about working out and boosting their energy at the gym.

**zaza**  
CLUB





The exquisite Clubhouse at DB Pride, is the perfect escape for you to retreat. Adorned with all the modern functionality and design, you have a space for your entertainment, fun, relaxation and bonding time— all under one roof.



Swimming and Toddler Pool











Multi Purpose Hall

# zaza CLUB



Gymnasium loaded with latest facilities



Family Salon & Spa with Steam  
Sauna, Jacuzzi



Pool side Cafeteria & Restaurant



Indoor Games- Carrom, Chess,  
Card Room, Billiards



Kids play area and Kids Day Care  
Centre (Play School)



Squash Court + Table Tennis



Library



Luxurious Guest Rooms





Sit outs & Viewing Balconies



Natural Light, Air & Open Space



Classy Living



High speed elevators



Rain Water Harvesting & Recharging  
Sewage Treatment Plant



Garbage Chute



RCC Roads with Paving and Street Lights

# Some delightful features

## Features that Amaze you!

Eco-friendly futuristic living for you never got any better than this.  
All your needs are so well taken care of.

A no-nonsense garbage disposal with garbage chute.

Eco-sustenance through rain water harvesting and purification.

Classy lifestyle features for you with all the goodness too.





# Specifications



## STRUCTURE:

Earthquake Resistant RCC Framed Structure with brick walls. Covered car parks in basement and ground floor levels.



## BEDROOMS:

**Flooring:** Superior quality vitrified tile flooring and skirting.

**Walls/Ceilings:** Putty finished walls painted with acrylic emulsion.

**Provisions:** Adequate electrical points with modular switches and provision for TV, AC and telephones.



## LIVING/DINING/PASSAGE/LOBBY:

**Flooring:** Superior quality vitrified tile flooring and skirting.

**Walls/Ceilings :** Putty finished walls painted with acrylic emulsion.

**Provisions:** Adequate electrical points with modular switches and provision for TV, AC and telephones.



## KITCHEN:

**Flooring/Walls:** Superior quality vitrified tile flooring. Dado with designer tile cladding.

**Platform:** Granite platform.

**Fitting/Fixtures:** CP fittings, SS sink.

**Provisions:** R.O./Water Purifier. Superior quality exterior grade tile flooring and skirting in wash area. Provision of chimney.



## BALCONIES:

**Flooring:** Superior quality exterior grade tile flooring and skirting.

**Walls/Ceilings:** Plastic emulsion paint for ceiling. All walls painted in textured paint / plastic emulsion paint.

**Others:** Safety Hand rails as per design.



## TOILETS

**Flooring:** Superior quality anti skid ceramic tile flooring and skirting.

**Walls:** Dado up to lintel level with designer motifs/highlighters.

**Plumbing:** Concealed plumbing for hot and cold water supply with uPVC pipes, SWR pipes shall be used for Sewage Lines.

**Fitting/Fixtures:** CP fittings of Jaquar or equivalent standard make. Sanitary ware shall be of Hindustan/Cera or equivalent standard make.

**Walls/Ceilings:** Plastic emulsion paint for ceiling.



## JOINERY:

**Doors:** Superior Quality designer doors with SS/Brass Fitting.

**Windows/Ventilators:** Heavy duty powder coated aluminum glazed windows of standard make made from specially designed and manufactured sections.



## ELECTRICALS:

**Switches:** Modular switches of MK/Havells or equivalent make.

**Wiring:** Copper wiring of Havells/Finolex/equivalent ISI marked.

**Provisions:** Provisions of Split AC, Satellite TV and RO system.



## EXTERIOR FINISHES:

**Paint:** Pleasant all weather exterior paint as per designers choice.



## COMMON AREAS AND SERVICES:

Well decorated & planned common areas with waiting area finished in combination of granite, marble, vitrified tiles, wood, sculpture, etc.



